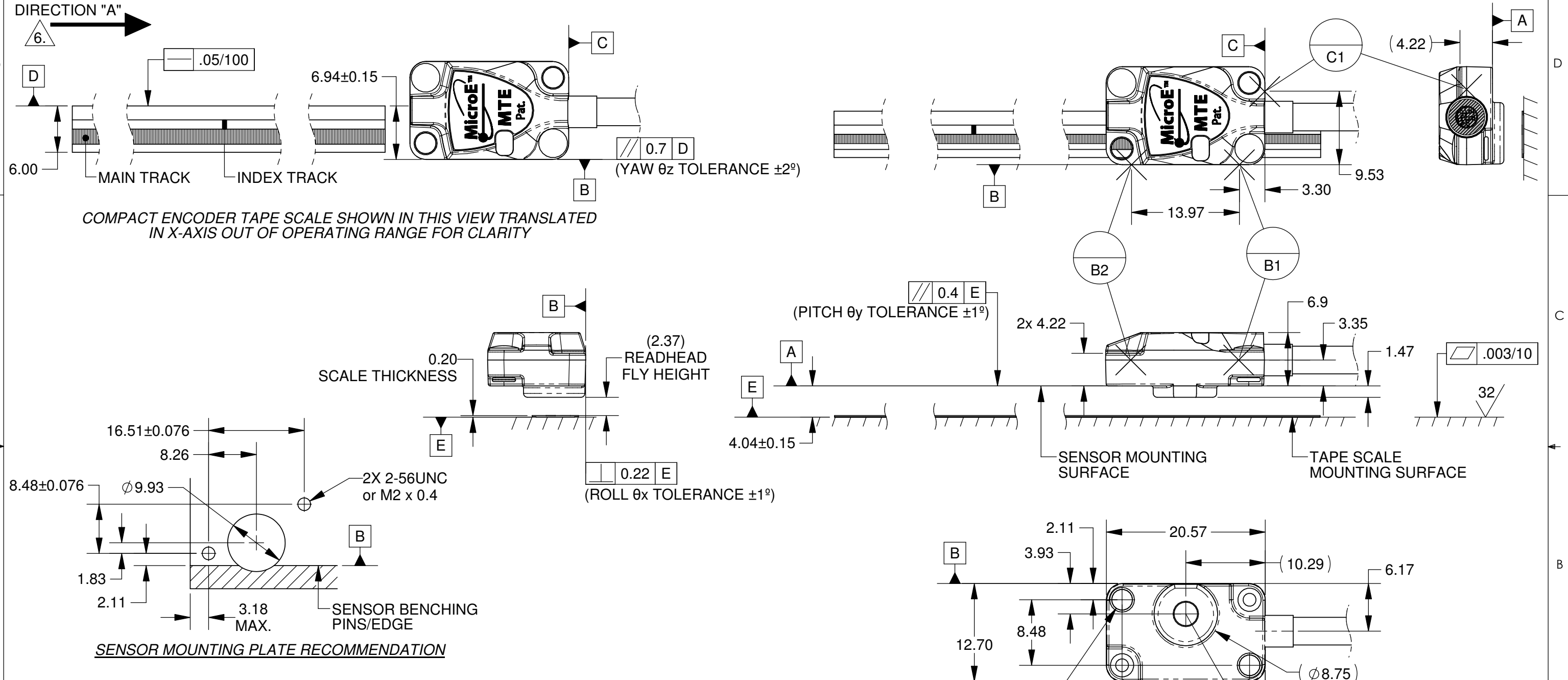


THESE DRAWINGS AND SPECIFICATIONS ARE THE PROPERTY OF MicroE Systems Corp. AND SHALL NOT BE REPRODUCED OR COPIED OR USED AS THE BASIS FOR MANUFACTURE OR SALE OF APPARATUS WITHOUT EXPRESS WRITTEN AUTHORIZATION FROM MicroE Systems Corp.

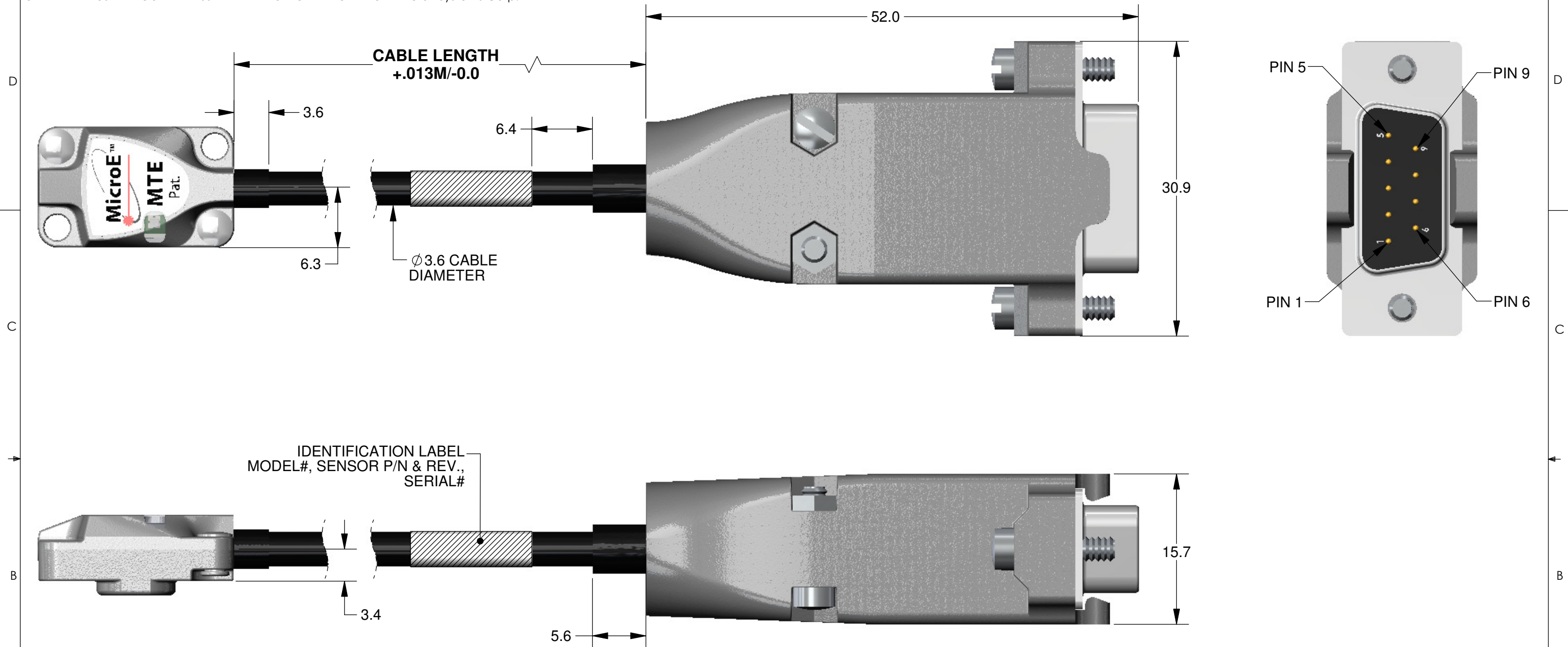
REVISIONS				
LTR	ECO	DESCRIPTION	DATE	APPROVED
7	2627	ADDED TABLE (ALIGNMENT TOL.), REVISED DIMS/VIEWS, SEE ECO	10/21/13	VB
8	2643	ADDED GEO. TOL., REVISED VIEWS/NOTES, SEE ECO	11/26/13	VB



- NOTE:
1. RECOMMENDED MOUNTING HARDWARE:
2-56 OR M2 SCREWS w/ 4 FLAT WASHERS (2 ON EACH SCREW) (OD OF WASHER NOT TO EXCEED 3.81).
MAX. TORQUE: 3.3 in. lbs
 2. RECOMMENDED SENSOR MOUNTING PLATE THICKNESS:
MINIMUM- 4 SCREW THREADS
MAXIMUM- ALLOW CLEARANCE TO SCALE AND SCALE MOUNTING HARDWARE (BENCHING SURFACES, CLAMPS, HUBS, ETC.)
BENCHING EDGES CAN BE BENCHING PINS, IF BENCHING EDGES ARE USED; ALLOW FOR CLEARANCES FOR ENCODER CABLE.
 3. IF BENCHING PINS/EDGE ARE TO BE USED, PINS/EDGE MUST BE PLACED ALONG DATUM EDGES OF SENSOR FOR OPTIMAL ALIGNMENT.
(REFERENCE DATUMS B1,B2 AND C1 FOR SENSOR BENCHING PINS/EDGES)
 4. HEIGHT OF SENSOR BENCHING PINS/EDGE MUST BE A MINIMUM OF 4.32 IN HEIGHT FROM DATUM A.
 5. SEE SHEET 3 FOR DIMENSIONS ON COMPACT ENCODER TAPE (CET) SCALES.
 6. WHEN CET SCALE MOVES IN DIRECTION "A" WITH RESPECT TO A STATIONARY READHEAD, OUTPUT SIGNAL B+ (PIN 3) LEADS OUTPUT SIGNAL A+ (PIN 4).

UNLESS OTHERWISE SPECIFIED ALL DIMENSIONS ARE IN MILLIMETERS DIM. APPLY AFTER PROCESSING INTERPRET ALL GEOMETRIC TOLS. PER ANSI Y14.5M-1994	APPROVALS	DATE	125 Middlesex Tpk. Bedford, MA 01730 DESCRIPTION: INTERFACE, ENCODER, 20um, COMPACT ENCODER TAPE SCALES, MICRO TAPE ENCODER
	DRAWN S.BUTURLIA	1/29/13	
	CHECKED		
	ENGRG.		
	MFG ENG		
	QA		
TOLERANCES ARE: DECIMALS: .X ± .25 .XX ± .13		ANGULAR: ±30 MIN.	
SUBJECT TO CHANGE WITHOUT NOTIFICATION			SIZE B DWG. NO. ID-00396 REV. 8 SCALE: 3rd ANGLE PROJECTION SHEET 1 OF 3

THESE DRAWINGS AND SPECIFICATIONS ARE THE PROPERTY OF MicroE Systems Corp. AND SHALL NOT BE REPRODUCED OR COPIED OR USED AS THE BASIS FOR MANUFACTURE OR SALE OF APPARATUS WITHOUT EXPRESS WRITTEN AUTHORIZATION FROM MicroE Systems Corp.



IDENTIFICATION LABEL
MODEL#, SENSOR P/N & REV.,
SERIAL#

MTE 9P D-Sub Pinouts		
Pin#	Function	Wire Color
1	Alarm	Yellow
2	Index Window +	Violet
3	B+	Grey
4	A+	Brown
5	5V	Red
6	Index Window -	Blue
7	B-	White
8	A-	Orange
9	GND/Inner Shield	Black

NOTE: GND AND INNER SHIELD ARE INTERNALLY CONNECTED.

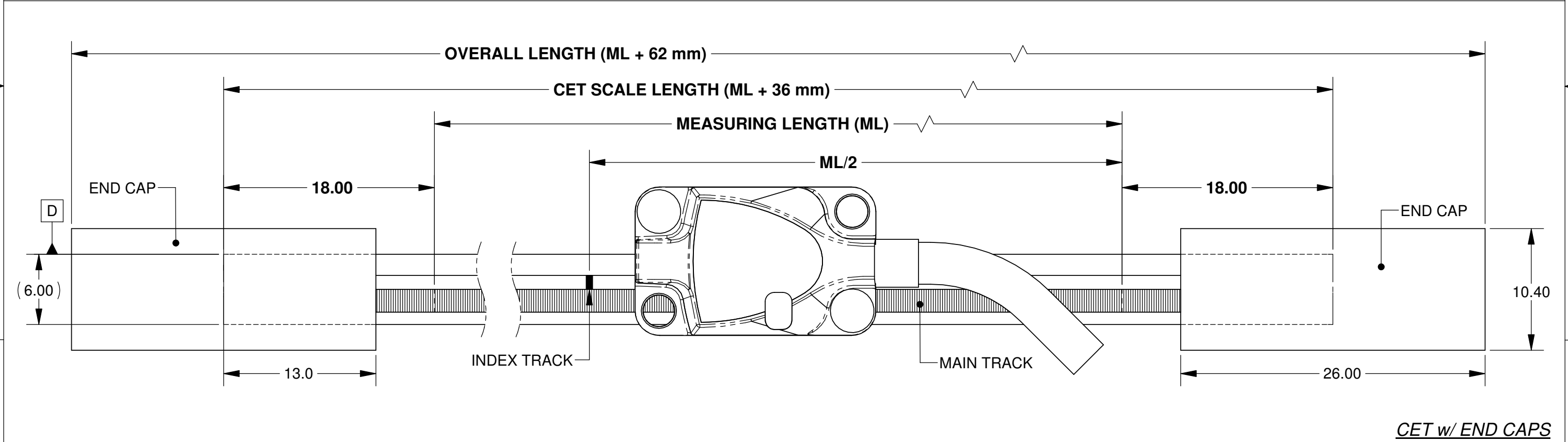
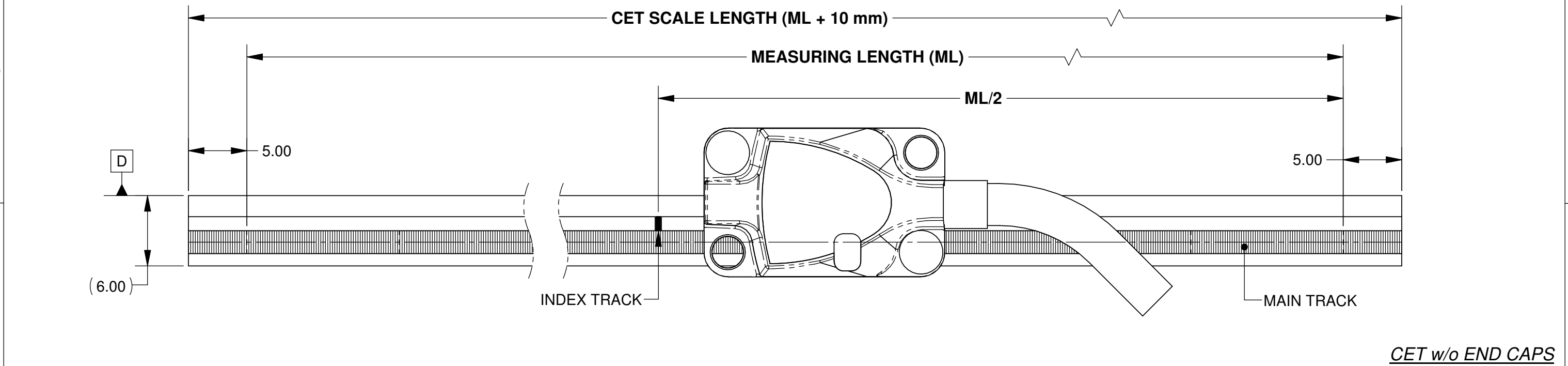
Cable Lengths
1 Meter
2 Meter
5 Meter
Custom

MicroE Systems 125 Middlesex Tpk.
Bedford, MA 01730

DESCRIPTION:
INTERFACE, ENCODER, 20um,
COMPACT ENCODER TAPE SCALES,
MICRO TAPE ENCODER

SIZE B	DWG. NO. ID-00396	REV. 8
SCALE:	CAD FILE:	3rd ANGLE PROJECTION SHEET 2 OF 3

THESE DRAWINGS AND SPECIFICATIONS ARE THE PROPERTY OF MicroE Systems Corp. AND SHALL NOT BE REPRODUCED OR COPIED OR USED AS THE BASIS FOR MANUFACTURE OR SALE OF APPARATUS WITHOUT EXPRESS WRITTEN AUTHORIZATION FROM MicroE Systems Corp.



- NOTES:
1. COMPACT ENCODER TAPE (CET) SCALES CAN BE SUPPLIED IN INDIVIDUAL PIECES OR IN CONTINUOUS FORM.
 2. END CAPS ARE OPTIONAL.
 3. FOR ALTERNATE INDEX LOCATIONS, MULTIPLE INDEXES OR ADDITIONAL FEATURES; CONTACT MICROE SYSTEMS.

		125 Middlesex Tpk. Bedford, MA 01730	
		DESCRIPTION: INTERFACE, ENCODER, 20um, COMPACT ENCODER TAPE SCALES, MICRO TAPE ENCODER	
SIZE B	DWG. NO. ID-00396	REV. 8	
SCALE:			SHEET 3 OF 3