

## Drop-in servo drive replacement

A cost-effective retrofit option for ORMEC SAC - DE servo drives is available. The R-Series (Replacement) Drive is based on the latest hardware and software technology and extends the life cycle of your current production equipment.

SAC - DE servo drives interfaced to ORMEC's GEN 3 and ORION DSP motion controllers.

### Benefits of the R-Drive :

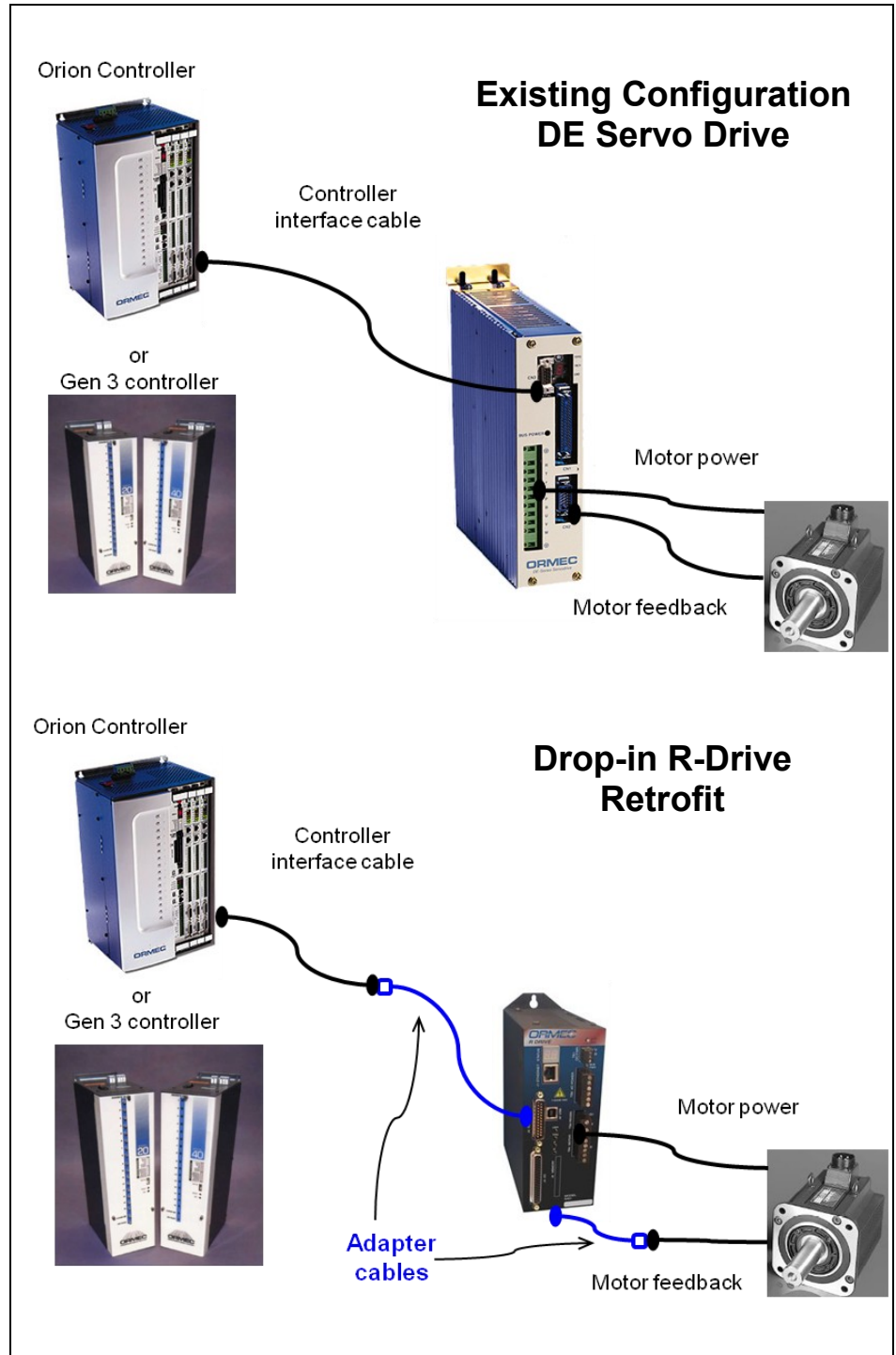
- Quick and easy installation
- Interfaces to existing motors
- Adapter cables simply connect to the existing motor and controller interface cables
- Field retrofit; no need to change application code
- Improved energy efficiency
- New diagnostic features

### Quick field retrofits

In minutes, an R-Drive can be installed in the field by using the available adapter kit. The kit includes a mounting plate and adapter cables for the controller interface and motor feedback cables.

R-Drive drop-in retrofits preserve your automation investment by using existing motors, cables and wiring.

Simply unplug the cables from the old drive and remove it. Install the R-Drive with the mounting plate from the kit. The plate bolts to the panel using the existing hole pattern. Connect the power and use the adapter cables to connect the interface and feedback cables and you are ready for production.



*The R-Drive efficiently replaces existing ORMEC SAC-DE Series Servo Drives for ORION and GEN 3 controller applications.*

If your application uses the absolute feedback mode, you should consult ORMEC sales for further information.

### New Features

- Diagnostic LEDs for quadrature feedback and torque command
- Real-time software diagnostics including a digital scope are available with ORMEC's MotionSet configuration and debug tools
- Real-time monitoring of drive values and event logging
- Built-in 24 VDC power supply for I/O devices
- Large library of additional motor interfaces

### Contact us

Protect your existing investment in motors and cabling with a proactive, cost-effective retrofit that includes the R-Drive drop-in replacement strategy. For more information please contact the motion control experts at ORMEC by phone (585) 385-3520 or email [sales@ormec.com](mailto:sales@ormec.com)

### Compatibility

ORMEC SAC-DE Drive	R-Drive replacement
SAC-DE01A2/I	SAC-RDE01A2-I
SAC-DE02A1/I	SAC-RDE02A1-I
SAC-DE02B2/I	SAC-RDE02B2-I
SAC-DE03B1/I	SAC-RDE03B1-I
SAC-DE03C2/I	SAC-RDE03C2-I
SAC-DE04C1/I	SAC-RDE04C1-I
SAC-DE04D2/I	SAC-RDE04D2-I

### Accessories

Model Number	Description
CBL-XRDE	18" adapter cable from existing CBL-ADE to R-drive
CBL-XRDEMAC	18" adapter cable from existing CBL-DEMAC to R-Drive
SAC-KRDE	Adapter kit: one CBL-XRDE, one CBL-XRDEMAC, and a mounting plate
CBL-ARDE/nn	Controller Interface cable between ORION controller and R-Drive. Replaces CBL-ADE in the existing configuration. nn is length in feet. (50 ft. max.)
CBL-GEN3-ARDE/nn	Controller interface cable between GEN 3 controller and R-Drive. Replaces CBL-GEN3-ADE in the existing configuration. nn is length in feet. (50 ft. max.)
CBL-RDEMAC/nn	Feedback interface cable between the DE motor and R-Drive. Replaces CBL-DEMAC in the existing configuration. nn is length in feet. (150 ft. max.)